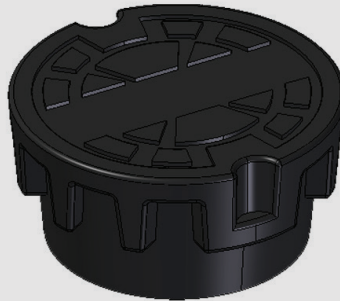
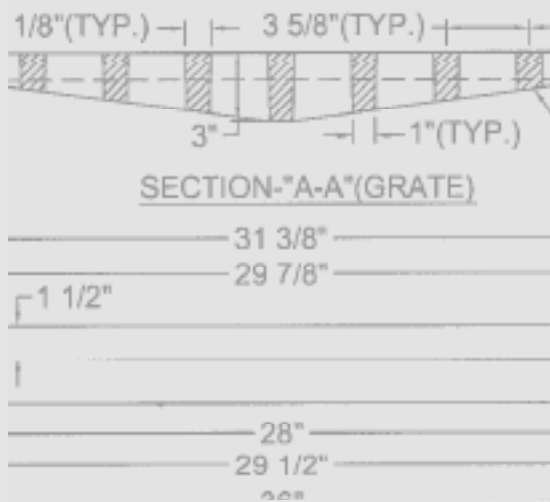


## Municipal Construction Castings



SIGMA Municipal Construction Castings are manufactured under the same stringent quality norms and procedures that we use in the production of our extensive waterworks products, such as AWWA Fittings and Accessories, Pipe Restraint Products and various components supplied to many American waterworks distributors.

In MCC, SIGMA is in the unique position as the only true national supplier of this product. SIGMA has steadily invested in design and new product development to reliably produce hundreds of items used by the various municipalities across the United States and Canada. We have several stocking locations across North America to provide reliable and prompt customer service.

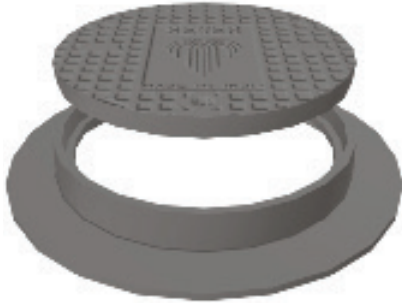
SIGMA currently offers a wide range of heavy castings such as Manhole Rings and Covers, Frames and Grates, and Curb Inlets. Additionally we also service the light castings market with an extensive offering of Valve Boxes, Curb Boxes, Meter Boxes, Risers, and Lids. SIGMA can also service custom requests for special pattern and labeling requirements when necessary.

Our technical team has the expertise to prepare the engineering drawings required to produce each item in an accurate and consistent manner with attention to all details to ensure the interchangeability with the current or future designs that meet your needs and the relevant standards.

# Municipal Construction Castings

## Heavy Duty Traffic Manhole Rings & Covers

Class 30 & 35 Gray or Ductile Iron



Standard Design  
Rings & Covers



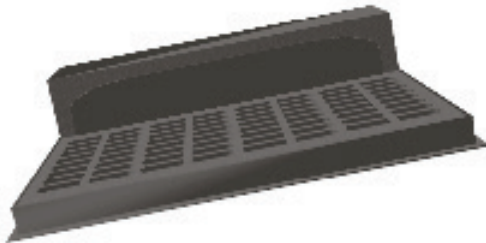
Water-tight  
Rings & Covers



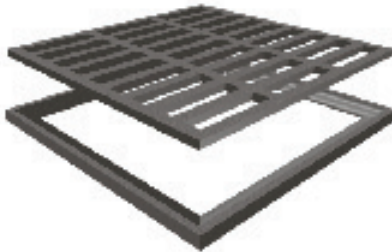
Special Design  
Rings & Covers

## Heavy Duty Traffic Curb Inlets, Grates & Frames

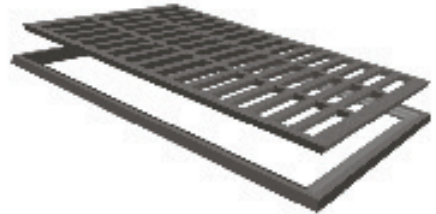
Class 30 & 35 Gray or Ductile Iron



Curb Inlet Frames and Grates  
with Curbpiece



Square or Rectangular Frames and Grates



## Manhole Riser Rings, Storm Inlets and Trench Grates

Class 30 & 35 Gray or Ductile Iron



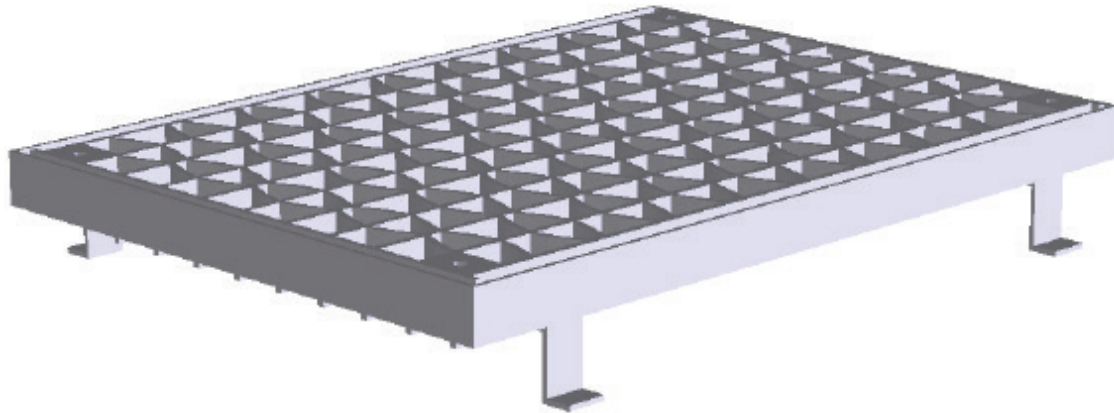
Manhole Extension Rings  
(1"-6" Rise)



Storm Inlet Rings & Covers



Trench Grates

**Steel Reticuline Frames and Grates****Valve, Service, and Curb Boxes & Accessories****Meter Boxes and Lids**Cast Iron Meter  
BoxesDrop Inlet  
Meter BoxesCast Iron and Ductile Iron  
Meter Box Lids

LOCATIONS

**Northeast Region**

Cream Ridge, New Jersey (HQ)  
 Phone (800) 999-2550  
 Fax (609) 758-1158  
 crm-sales@sigmaco.com

Victoriaville, Quebec, Canada  
 Phone (888) 744-6262  
 Fax (819) 758-1153  
 jboucher@repco.ca

Innisfil, Ontario, Canada  
 Phone (877) 436-3800  
 Fax (705) 436-6338  
 tanya@concordsupply.ca

**Midwest Region**

Sauk Village, Illinois  
 Phone (888) 999-0420  
 Fax (708) 758-6790  
 chi-sales@sigmaco.com

**Southeast Region**

Alexander City, Alabama  
 Phone (800) 824-4513  
 Fax (256) 234-4956  
 rps-sales@sigmaco.com

**Southwest Region**

Houston, Texas  
 Phone (800) 999-0109  
 Fax (281) 987-0200  
 htn-sales@sigmaco.com

**Western Region**

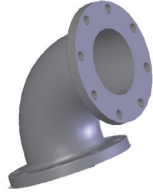
Ontario, California  
 Phone (800) 688-6230  
 Fax (909) 391-2033  
 ont-sales@sigmaco.com

Auburn, Washington  
 Phone (800) 688- 6230

[www.sigmaco.com](http://www.sigmaco.com)

Terms and Conditions of Sales available at our website.

**AWWA Ductile Iron Fittings**



- 2-64" C153 Ductile Iron Mechanical Joint Class 350
- 2-48" C110 Full Body Mechanical Joint
- 2-64" C110 Cast Iron/Ductile Iron Flanged Fittings
- 3-24" C153 TRIM TYTON® Compact Push On Fittings
- 4-24" C110 Full Body Push On Fittings
- C116 Fusion Bonded Epoxy lining available
- PROTECTO 401® ceramic epoxy lining available

**Mechanical Joint Accessories**



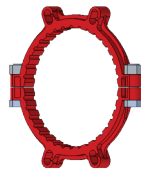
- Prepackaged and loose mechanical joint accessories
- SIGMASEAL™ improved mechanical joint gasket
- Snap-on multi-purpose gasket for ductile iron or PVC pressure pipes
- Ductile iron set screw retainer glands
- OMNI-SLEEVE™ improved wall penetration sleeve
- Specialty bolts and nuts for mechanical joint assemblies

**ONE-LOK™ Wedge Action Restraints**



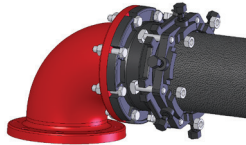
- 3-48" ONE-LOK SLDE restraint for ductile iron pipe (import or domestic)
- 3-36" ONE-LOK SLCE restraint for PVC pipe (import or domestic)
- 3-36" ONE-LOK SLDEH bell joint harness for ductile iron pipe
- 4-12" / 20" ONE-LOK SLDM restraint for oversized cast iron pipe
- 4-36" ONE-LOK SSLD split restraint for existing ductile iron pipe
- 4-36" ONE-LOK SSLDH split restraint harness for existing ductile iron pipe
- 3-12" ONE-LOK SLCEH bell joint harness for PVC pipe

**PV-LOK™ Serration Lock Restraints**



- 4-48" PV-LOK PWM Restraint for MJ Fitting to PVC pipe
- 4-48" PV-LOK PWP Restraint for PVC bell joint restraint
- 4-48" PV-LOK PVPF Restraint for PVC fitting to PVC pipe
- 4-12" PV-LOK PWH PVC bell joint harness
- 2-12" PV-LOK PVM Restraint for MJ Fitting to IPS PVC pipe
- 2-12" PV-LOK PVP Restraint for IPS PVC pipe bell joint
- 4-8" PV-LOK PVPF Restraints for IPS PVC pressure fitting

**Flange Adapters**



- 3-36" SIGMAFLANGE SFA flange adapter sleeve for PVC and DIP
- 2-48" ZIP FLANGE set screw style flange adapter

**Municipal Construction Castings**



- Manhole Rings and Covers
- Curb and Meter Boxes
- Frames and Grates
- Storm Inlets
- Valve Boxes, Risers, and Extensions

**Products for the Ductile Iron Fabricator**



- 3-64" High Hub Threaded Flanges
- 3-48" Tapped High Hub Threaded Flanges
- 3-36" Extra Heavy 250lb Drilled Threaded Flanges
- 3-48" Threaded MJ Bell Adapters
- 3-48" MJ x PE Bell adapter (2ft)
- 3-48" Anchor Flanges
- 3-16" Filler Flanges

**Extended Range Products**



- FLANGE-PAK™ prepackaged flange accessory sets
- Polyethylene encasement for ductile iron pipe
- Copper tubing products
- Tracer wire & detectable/non-detectable marking tape
- Pipe joint lubricant & hydraulic cement
- Socket clamps and tie rod accessories
- BOXLOK Valve Box Alignment Device
- Cast Iron Companion Flanges

TRIM-TYTON and TYTON are registered trademarks of the United States Pipe and Foundry Company • PROTECTO 401 is a registered trademark of Induron, Inc.