



5616 / 5626 / 5636

STAINLESS STEEL REPAIR CLAMP - 5600 SERIES

APPLICATIONS:

ROBAR 5600 Series Repair Clamps are used to effectively repair holes or breaks in water mains.

MATERIAL SPECIFICATIONS:

Shell: T304 Stainless Steel, fully passivated*.
 Sidebar: T304 Stainless Steel, fully passivated*.
 Armor: T304 Stainless Steel, fully passivated*.
 Gasket: SBR (Buna S) Rubber.
 Fasteners: 5/8" NC T304 Stainless steel.
 Nuts coated with anti-galling compound.
 Torque is 70-80 ft. lbs.

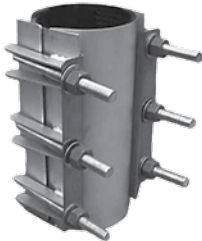
OPTIONS:

- Outlet taps: 3/4" to 2" IP or 3/4" to 2" CC.
- Other steel and rubber material specifications.
- Multiple sections other than those specified below.



5616 (Style 1)

- 1 Section sizes 3" - 12".



5626 (Style 2)

- 2 Sections sizes 4" - 16".



5636 (Style 3)

- 3 Sections sizes 12" - 30".

HOW TO ORDER:

Determine the product number (5616, 5626, 5636), high limit number (see pages 5.1.2, 5.1.3 and 5.1.4), length of clamp and outlet size if any and then order by using the appropriate ordering code as shown in the following example.

For a one section (**Style 1**) clamp, 8" long, for a pipe with an OD of between (6.85" - 7.25"), the ordering code is:

5616	-	7.25"	x	8"
product		high limit of		clamp
number		range		width

i.e. **5616 - 7.25 x 8**

As above but with a 3/4" cc outlet: **5616 - 7.25 - 8 x 3/4 CC**

For a two section (**Style 2**) clamp, 12" long, for a pipe with an OD of between (7.05" - 7.85"), the ordering code is:

5626	-	7.85"	x	12"
product		high limit of		clamp
number		range		width

i.e. **5626 - 7.85 x 12**

As above but with a 3/4" cc outlet: **5626 - 7.85 - 12 x 3/4 CC**

For a three section (**Style 3**) clamp, 16" long, for a pipe with an OD of between (21.40" - 22.60"), the ordering code is:

5636	-	22.60"	x	16"
product		high limit of		clamp
number		range		width

i.e. **5636 - 22.60 x 16**

As above but with a 3/4" cc outlet: **5636 - 22.60 - 16 x 3/4 CC**

ROBAR IS THE ORIGINAL DEVELOPER AND PATENT HOLDER OF THE "ALL STAINLESS REPAIR CLAMP".

ALWAYS SPECIFY "ROBAR" WHEN ORDERING REPAIR CLAMPS.

Repair Clamps are designed for pipeline repairs NOT for joining two plain end pieces of pipe.

- Note: * Refers to chemically treating Stainless Steel after welding ("Pickled/Passivated") to return it to its original appearance.
- Prices for special designs, lengths or diameters may be obtained from the factory on request.
 - If tapped outlets are required, add outlet price from price list.
 - EC Pads available upon request.



This product is tested and certified by WQA to NSF/ANSI standard 61

ROBAR INDUSTRIES LTD.

Surrey, British Columbia
 Phone: 1-800-663-6553

Saint-Bruno, Quebec
 Phone: 1-800-315-9525

Website: www.robarindustries.com / E-mail: waterworks@robarindustries.com



5616

STAINLESS STEEL REPAIR CLAMP - STYLE 1

5616 REPAIR CLAMP CHART

NOMI- NAL PIPE SIZE	WORKING RANGE			APPROXIMATE SHIPPING WEIGHT (LBS.)					
				LENGTH OF CLAMP (Common Sizes)					
	LOW	PIPE OD	HIGH*	6"	8"	12"	16"	20"	24"
3	3.45	3.50	3.85	5.0	7.0	9.5	12.5	17.0	20.0
	3.95		4.35						
4	4.45	4.50	4.85	5.5	7.5	10.5	13.8	18.0	21.3
	4.74		4.80						
	5.05	5.45							
	5.35	5.75							
6	5.95	6.63	6.35	6.3	8.3	12.0	15.8	20.0	24.0
	6.40		6.80						
	6.60		7.00						
	6.80	6.90	7.20						
	6.85		7.25						
	7.05		7.45						
	7.40		7.80						
8	7.95	8.63	8.35	7.0	9.3	13.0	17.0	22.0	26.5
	8.40		8.80						
	8.60		9.00						
	8.90	9.05	9.30						
	9.00		9.40						
	9.30		9.70						
10	9.75	10.75	10.15	10.3	14.3	17.8	24.0	28.5	
	10.50		10.90						
	10.70		11.10						
	11.05		11.10						11.45
	11.40		11.80						
12	12.00	12.75	12.40	12.3	16.3	21.3	28.0	33.3	
	12.55		12.95						
	12.70		13.10						
	13.10		13.20						13.50
	13.40		13.80						
	13.70		14.00						14.10

All dimensions are in inches.

HOW TO ORDER:

See HOW TO ORDER on page 5.1.1.

Note: * The high limit of the range is used in the ordering code.

- 3/4" - 2" IP or CC outlets are available for an additional cost.
- Longer repair clamps are available. Please contact ROBAR for more information.



This product is tested and certified by WQA to NSF/ANSI standard 61

ROBAR INDUSTRIES LTD.

Surrey, British Columbia
Phone: 1-800-663-6553

Saint-Bruno, Quebec
Phone: 1-800-315-9525

Website: www.robarindustries.com / E-mail: waterworks@robarindustries.com



5626

STAINLESS STEEL REPAIR CLAMP - STYLE 2

5626 REPAIR CLAMP CHART

NOMI- NAL PIPE SIZE	WORKING RANGE			APPROXIMATE SHIPPING WEIGHT (LBS.)				
				LENGTH OF CLAMP (Common Sizes)				
	LOW	PIPE OD	HIGH*	8"	12"	16"	20"	24"
4	4.45	4.50	5.25	10.8	16.0	21.0	27.0	32.3
	4.74	4.80	5.54					
	5.35		6.15					
	5.90		6.70					
6	6.40	6.63	7.20	11.3	17.0	21.5	29.0	34.5
	6.85	6.90	7.65					
	7.05		7.85					
8	7.95	8.63	8.75	12.5	18.3	23.5	31.0	36.8
	8.40	9.05	9.20					
	9.00		9.80					
	9.30		10.10					
10	10.00	10.75	10.80	13.8	19.3	25.0	33.0	38.5
	10.70	11.10	11.50					
	11.05		11.85					
	11.40		12.20					
12	12.00	12.75	12.80	15.8	23.5	28.3	39.0	45.0
	12.70	13.20	13.50					
	13.10		13.90					
	13.40		14.20					
14	13.70	14.00	14.50	16.5	24.5	29.8	41.0	48.8
	14.00		14.80					
	14.95	15.30	15.75					
16	15.75	16.00	16.55	18.0	26.0	31.0	43.0	50.6
	17.20	17.40	18.00					

All dimensions are in inches.

HOW TO ORDER:

See HOW TO ORDER on page 5.1.1.

Note: * The high limit of the range is used in the ordering code.

- 3/4" - 2" IP or CC outlets are available for an additional cost.

- Longer repair clamps are available. Please contact ROBAR for more information.



This product is tested and certified by WQA to NSF/ANSI standard 61

ROBAR INDUSTRIES LTD.

Surrey, British Columbia
Phone: 1-800-663-6553

Saint-Bruno, Quebec
Phone: 1-800-315-9525

Website: www.robarindustries.com / E-mail: waterworks@robarindustries.com



5636

STAINLESS STEEL REPAIR CLAMP - STYLE 3

5636 REPAIR CLAMP CHART

NOMI- NAL PIPE SIZE	WORKING RANGE			APPROXIMATE SHIPPING WEIGHT (LBS.)				
				LENGTH OF CLAMP (Common Sizes)				
	LOW	PIPE OD	HIGH*	8"	12"	16"	20"	24"
12	12.80	13.20	14.00	18.5	31.0	40.5	52.0	62.5
	13.65	14.00	14.85					
14	14.85	15.30	16.05	20.0	33.0	43.0	54.0	65.5
	15.92	16.00	17.12					
16	16.25		17.45	22.5	34.0	45.5	56.0	67.5
	17.10	17.40	18.30					
18	17.40	18.00	18.60	23.0	34.5	46.0	58.0	69.0
	19.20	19.50	20.40					
20	21.40	21.60	22.60	24.0	37.0	48.0	60.0	72.0
	22.80		24.00					
	23.45	24.00	24.65					
24	24.45		25.65	28.0	41.0	52.0	70.0	84.0
	25.50	25.80	26.70					
	28.25		29.45					
30	29.40	30.00	30.60	34.0	46.0	51.0	74.0	89.0
	29.85		31.05					
	30.85		32.05					
	31.50	32.00	32.70					

All dimensions are in inches.

HOW TO ORDER:

See HOW TO ORDER on page 5.1.1.

Note: * The high limit of the range is used in the ordering code.

- 3/4" - 2" IP or CC outlets are available for an additional cost.

- Longer repair clamps are available. Please contact ROBAR for more information.



This product is tested and certified by WQA to NSF/ANSI standard 61

ROBAR INDUSTRIES LTD.

Surrey, British Columbia
Phone: 1-800-663-6553

Saint-Bruno, Quebec
Phone: 1-800-315-9525

Website: www.robarindustries.com / E-mail: waterworks@robarindustries.com